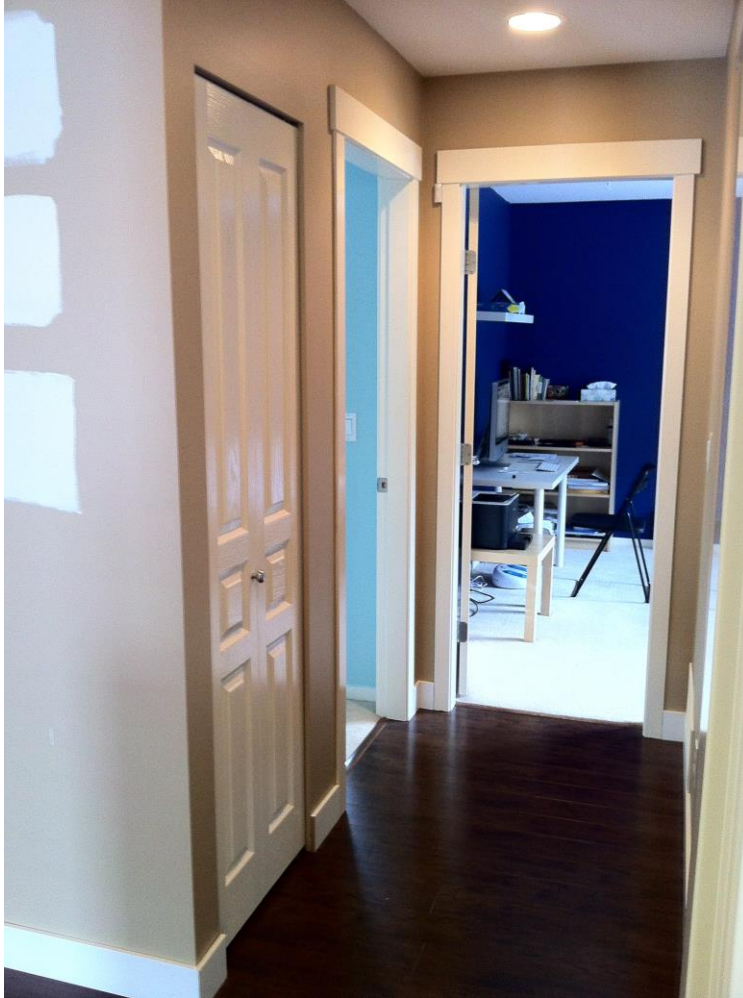

The Next Level

Motion Sensors

- 2-Way and 3-Way lighting

Motion Sensor - Upper Hall



- **Selling Points:**
 - ✓ “Hands-free” Lighting
 - ✓ Invisible to User
 - ✓ Energy Savings
- **Installation:**
 - NYCE Motion Sensor
 - Control4 Dimmer
 - Control4 2-Button Switch
 - Composer – Events to Actions
Timer and Conditional
 - Sensor covers length of hallway

Motion Sensor - Upper Hall



Composer 2.4.0

File Driver Go Tools Help

Programming

Device Events

- Brad Home Network
 - Home
 - House
 - Upper
 - Hall
 - Room Variables
 - Upper Hall MS
 - Upper Hall Switch
 - Upper Hall Light
 - Master Bath
 - Master Bed
 - Stairs
 - Upstairs Bath
 - Main
 - Lower
 - Variables
 - Programming Control
 - 4Store
 - System Diagnostics
 - Email Notification
 - Lighting Scenes
 - Remote Access
 - Rhapsody
 - Scheduler
 - Timer
 - Update Manager

Upper Hall Light Events

- Top Button Pushed
- Top Button Released
- Bottom Button Pushed
- Bottom Button Released
- Level Changes
- Top Single Tap
- Top Double Tap
- Top Triple Tap
- Bottom Single Tap
- Bottom Double Tap
- Bottom Triple Tap

Script

When Hall->Upper Hall Light top button is single tapped

- ⚙️ If the Hall->Upper Hall MS is not sensing motion
 - ➡️ Start Timer 'Upstairs Hall Light'

- Switch Single Tap
- Check Motion
 - Start Timer

Composer 2.4.0

File Driver Go Tools Help

Programming

Device Events

- Brad Home Network
 - Home
 - House
 - Upper
 - Hall
 - Room Variables
 - Upper Hall MS
 - Upper Hall Switch
 - Upper Hall Light
 - Master Bath
 - Master Bed
 - Stairs
 - Upstairs Bath
 - Main
 - Lower
 - Variables
 - Programming Control
 - 4Store
 - System Diagnostics
 - Email Notification
 - Lighting Scenes
 - Remote Access
 - Rhapsody
 - Scheduler
 - Timer
 - Update Manager

Upper Hall Switch Events

Button 1

- Press
- Release
- Single Tap
- Double Tap
- Triple Tap

Script

When Hall->Upper Hall Switch button 1 is single-clicked

- ⚙️ If the Hall->Upper Hall MS is not sensing motion
 - ➡️ Start Timer 'Upstairs Hall Light'

- Button Single Tap
- Check Motion
 - Start Timer

Motion Sensor - Upper Stairs



- **Selling Points:**
 - ✓ “Hands-free” Lighting
 - ✓ Invisible to User
 - ✓ Energy Savings
- **Installation:**
 - NYCE Ceiling Motion Sensor
 - Control4 Dimmer
 - Control4 2-Button Switch
 - Composer – Events to Actions
Timer and Conditional
 - Sensor covers both flights of stairs

Motion Sensor - Main Hall



- **Selling Points:**
 - ✓ “Hands-free” Lighting
 - ✓ Invisible to User
 - ✓ Energy Savings
- **Installation:**
 - NYCE Ceiling Motion Sensor
 - Control4 Dimmer
 - 2 x Control4 2-Button Switch
 - Composer – Events to Actions
Timer and Conditional
 - Sensor creates “zone” covering main hallway