

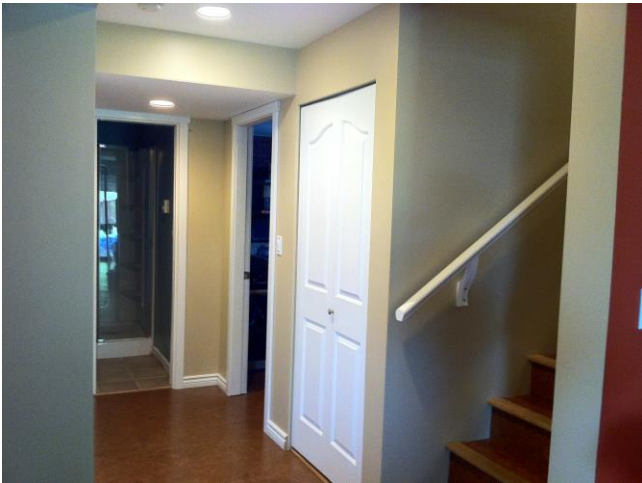
---

## The Next Level

### Motion Sensors

- Multiple Motion Sensors
- 2-Way and 3-Way Lighting

# Motion Sensors - Lower Stairs and Hallway



- **Selling Points:**
  - ✓ “Hands-free” Lighting
  - ✓ Invisible to User
  - ✓ Energy Savings
  
- **Installation:**
  - 2 x NYCE Motion Sensors
  - Control4 Dimmer
  - 2 x Control4 2-Button Switch
  - Composer – Events to Actions  
Timer and Conditionals
  - Sensors cover top stairs and lower hallway

# Motion Sensors - Lower Stairs and Hallway



Composer 2.4.0 - Brad Home Network - For Presentation.c4p

File Driver Go Tools Help

**Programming**

Device Events

- Brad Home Network
  - Home
    - House
      - Upper
      - Main
      - Lower
        - Bar
        - Laundry
        - Man Cave
        - Stairs
          - Room Variables
          - Lower Hall
            - Bottom of Lower Stairs
            - Lower Hall MS
            - Lower Stairs CMS
            - Lower Stairs Lights
          - Storage
          - TV Room
- Variables
- Programming Control
- 4Store
- System Diagnostics
- Email Notification
- Lighting Scenes
- Remote Access
- Rhapsody
- Scheduler
- Timer
- Update Manager

Lower Hall MS Events

- When the Lower Hall MS senses motion
- When the Lower Hall MS stops sensing motion

Battery Low

- No Motion
- Check Other Motion Sensor
  - Start Timer

Composer 2.4.0 - Brad Home Network - For Presentation.c4p

File Driver Go Tools Help

**Programming**

Device Events

- Brad Home Network
  - Home
    - House
      - Upper
      - Main
      - Lower
        - Bar
        - Laundry
        - Man Cave
        - Stairs
          - Room Variables
          - Lower Hall
            - Bottom of Lower Stairs
            - Lower Hall MS
            - Lower Stairs CMS
            - Lower Stairs Lights
          - Storage
          - TV Room
- Variables
- Programming Control
- 4Store
- System Diagnostics
- Email Notification
- Lighting Scenes
- Remote Access
- Rhapsody
- Scheduler
- Timer
- Update Manager

Lower Stairs CMS Events

- When the Lower Stairs CMS senses motion
- When the Lower Stairs CMS stops sensing motion

Battery Low

- No Motion
- Check Other Motion Sensor
  - Start Timer

# Motion Sensors - Lower Stairs and Hallway



Composer 2.4.0 - Brad Home Network - For Presentation.c4p

File Driver Go Tools Help

**Programming**

Device Events

- Brad Home Network
  - Home
    - Upper
    - Main
    - Lower
      - Bar
      - Laundry
      - Man Cave
      - Stairs
        - Room Variables
        - Lower Hall
          - Bottom of Lower Stairs
          - Lower Hall MS
          - Lower Stairs CMS
          - Lower Stairs Lights
        - Storage
        - TV Room

Variables

- Programming Control
- 4Store
- System Diagnostics
- Email Notification
- Lighting Scenes
- Remote Access
- Rhapsody
- Scheduler
- Timer
- Update Manager

Lower Stairs Lights Events

- Top Button Pushed
- Top Button Released
- Bottom Button Pushed
- Bottom Button Released
- Level Changes
- Top Single Tap
- Top Double Tap
- Top Triple Tap
- Bottom Single Tap
- Bottom Double Tap
- Bottom Triple Tap

**Script**

When Stairs->Lower Stairs Lights top button is single tapped

- If the Stairs->Lower Hall MS is not sensing motion
- If the Stairs->Lower Stairs CMS is not sensing motion
- Start Timer 'Lower Stairs Light'

- ## Switch Single Tap
- Check both Motion Sensors
  - Start Timer

Composer 2.4.0 - Brad Home Network - For Presentation.c4p

File Driver Go Tools Help

**Programming**

Device Events

- Brad Home Network
  - Home
    - Upper
    - Main
    - Lower
      - Bar
      - Laundry
      - Man Cave
      - Stairs
        - Room Variables
        - Lower Hall
          - Bottom of Lower Stairs
          - Lower Hall MS
          - Lower Stairs CMS
          - Lower Stairs Lights
        - Storage
        - TV Room

Variables

- Programming Control
- 4Store
- System Diagnostics
- Email Notification
- Lighting Scenes
- Remote Access
- Rhapsody
- Scheduler
- Timer
- Update Manager

Lower Hall Events

Button 1

- Press
- Release
- Single Tap
- Double Tap
- Triple Tap

**Script**

When Stairs->Lower Hall button 1 is single-clicked

- If the Stairs->Lower Hall MS is not sensing motion
- If the Stairs->Lower Stairs CMS is not sensing motion
- Start Timer 'Lower Stairs Light'

- ## Button Single Tap
- Check both Motion Sensors
  - Start Timer