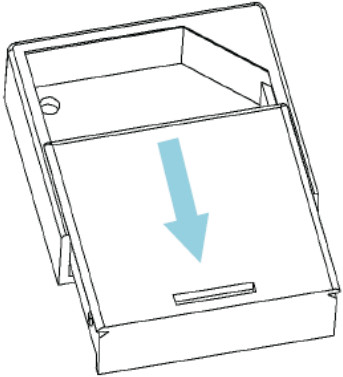


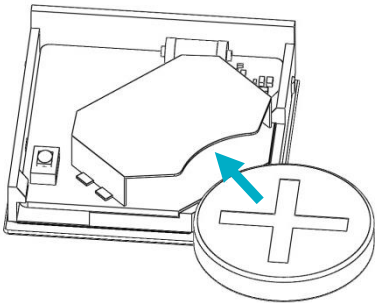
GARAGE DOOR (TILT) SENSOR INSTALLATION GUIDE



STEP 1: INSTALL BATTERY



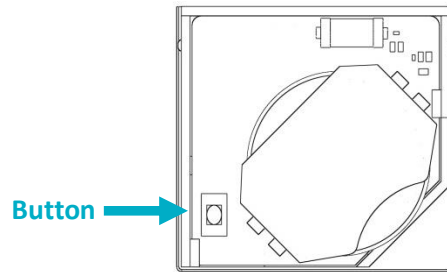
Slide open the Garage Door Sensor's top housing. Install the CR2032 battery in the housing top as shown below.



STEP 2: INSTALL DRIVER AND IDENTIFY

Install the device's driver:
[GarageSensor_zb_nyce_3014.c4i](#)
Download driver from:
www.nycesensors.com/support
or from Control4's online database

Copy to My Documents\Control4\Drivers
Open Composer and add device to project
(Manufacturer = "NYCE")



Identify the device by pressing the button 4 times while its identify window is open. The device's 64-bit address should appear in the identify window's text box.

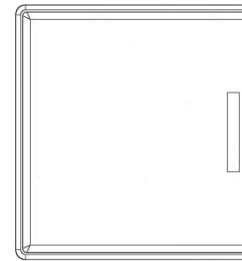
Add a Generic Garage Door Driver to project and bind the two drivers together in Connections -> Control/AV

STEP 3: PROPER DEVICE ORIENTATION

Mount the Garage Door Sensor on a horizontal pane of the garage door. The Sensor should be mounted on the top pane (fully closed) or bottom pane (fully open), depending on the desired operation. A pair of sensors can be used on both bottom and top panes for full garage door reporting, if desired.

Ensure that the Garage Door Sensor is oriented with the bar symbol vertical, parallel to the edge of the garage door, as shown in the diagram below on the left.

CORRECT ALIGNMENT



Garage Door Sensor

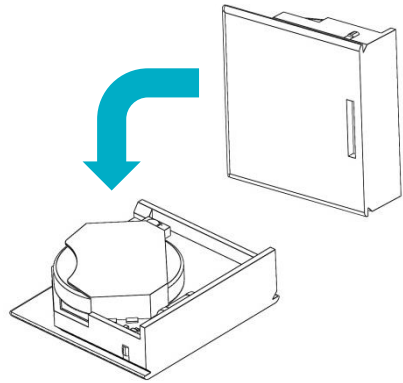
Right edge of Garage Door

INCORRECT ALIGNMENT



Right edge of Garage Door

STEP 4: TEST THE SENSOR

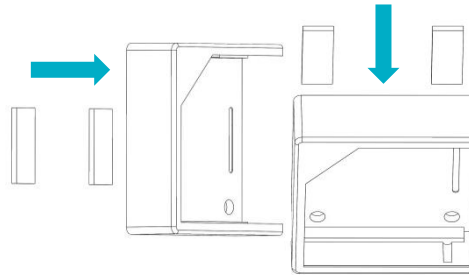


Test the Sensor from the desired location before permanently installing it by flipping it forward as shown above, this is the same action as the garage door opening. Check that the icon in Navigator or Composer's List View updates with a Closed or Open icon.

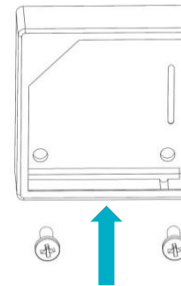
STEP 5: INSTALL THE SENSOR HOUSING

Using the methods shown below, install the Garage Door Sensor bottom housing on a clean surface.

OPTION 1: 2-SIDED TAPE



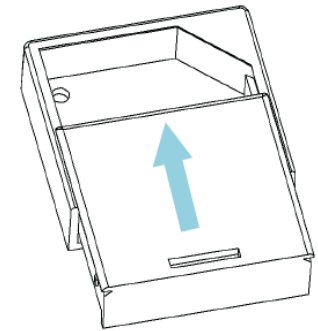
OPTION 2: SCREWS



Notes: Installation on metal surfaces can reduce transmission range. Ensure that the device is installed in a dry location away from water, moisture and rain.



STEP 6: INSTALL THE SENSOR



Once you have installed the bottom housing and confirmed the device is communicating, insert the sensor top housing as shown above

PRODUCT FUNCTION AND LED INDICATORS

BUTTON	LED	ACTION	LED	DESCRIPTION
2 TIMES	●●	NETWORK STATUS	●● ●●	JOINED NOT JOINED
4 TIMES	●●●●	NETWORK JOIN	●●●● ●●●● ●●●● ●●●●	SEARCHING FOR NETWORK DEVICE BEING CONFIGURED DEVICE JOINED DEVICE FAILED TO JOIN
6 or 10 TIMES	●●●●●● or ●●●●●●●●	NETWORK LEAVE and DEFAULT	●● ●●●●●●	LEAVE (IF JOINED) and DEFAULTS RESTORED
		NO ACTION	● ●● ●●●	WRONG BUTTON PRESS NETWORK ERROR, RETRY DEVICE BUSY
		POWER UP	●●●●●●●●	

READING AND WRITING ATTRIBUTES

To Read:

In Composer, under the Actions tab, click on Read Attributes. Wake up the device by tilting or with a double button press. Check the updated attribute value under the Properties tab. The Attribute Status field should read: "Attributes are up to date."

To Write:

In Composer, change the attribute value (0 - 10 seconds) under the Properties tab and click Set. Under the Actions tab, click on Write Attributes. Wake up the device by tilting or with a double button press. Check the Attribute Status field. It should read: "Attributes are up to date".