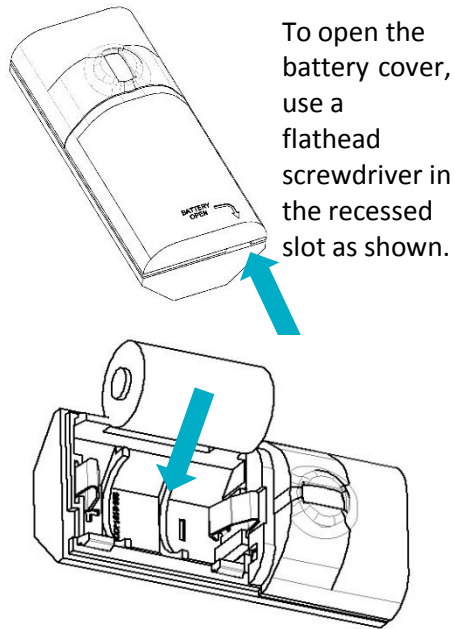




CURTAIN MOTION SENSOR INSTALLATION GUIDE



STEP 1: INSTALL BATTERY

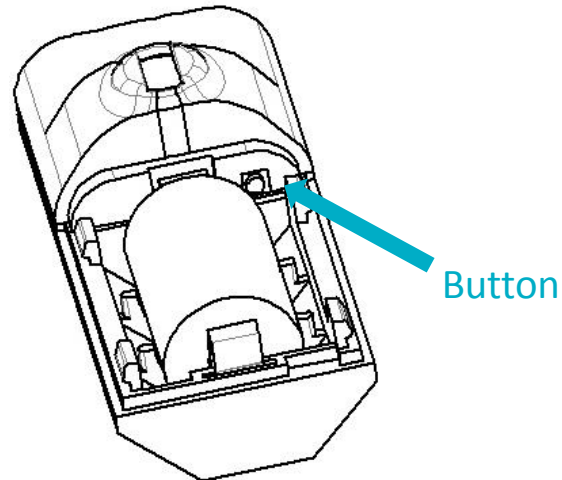


To open the battery cover, use a flathead screwdriver in the recessed slot as shown.

Remove the packing tape, if present, from the battery cover and install the CR2 battery with polarity as shown.

If the battery is pre-installed, simply remove the plastic pull tab.

STEP 2: JOIN THE NETWORK



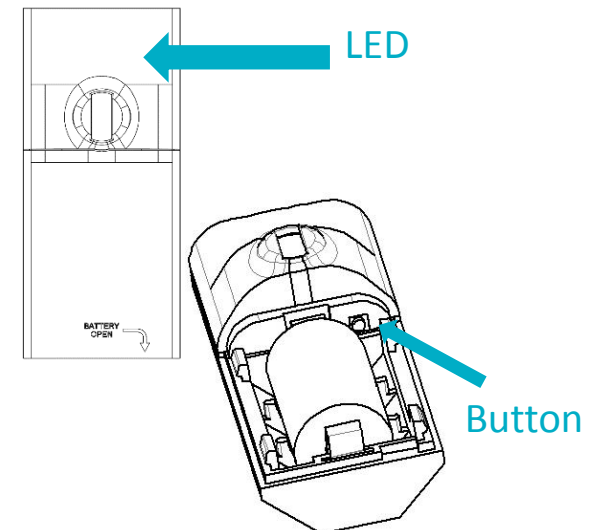
USERS

Refer to the instructions on your system's computer software, web portal or smart phone application for the proper method to join and configure the Curtain Motion Sensor. The button may be pressed with the end of a paper clip or a pencil. Do not use a sharp object like a tack or pin.

ECOSYSTEM DEVELOPERS

Contact NYCE for our "ZigBee Device Messaging Specification" document with details on how to integrate the Curtain Motion Sensor and other NYCE products into your ZigBee compliant network.

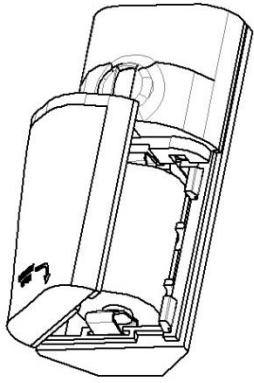
STEP 3: TEST THE SENSOR



Test the Curtain Motion Sensor from the desired location before permanently installing it by pressing the button twice to check network status.

Check that the Curtain Motion Sensor's LED blinks green three times to indicate it is joined and communicating with the system controller.

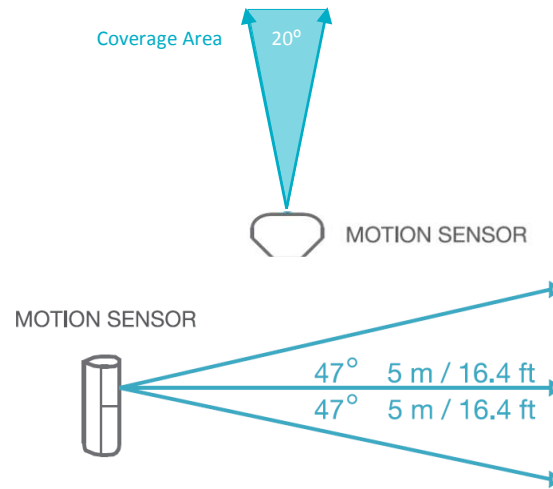
STEP 4: VERIFY DEVICE AND CLOSE



Verify that the device is sensing motion. The sensor requires a 3 minute “warm-up” time before it will report motion. The LED should flash red and motion should be indicated on your web portal or smart phone application.

Snap the battery cover into place.

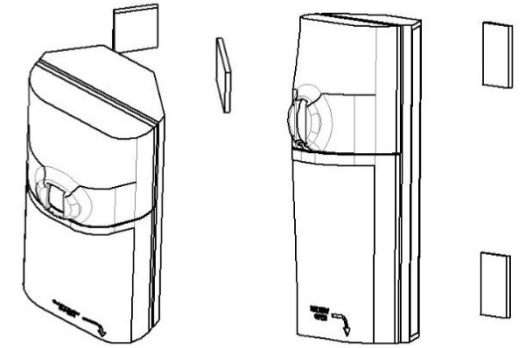
STEP 5: PLACEMENT GUIDELINES



Orient the Curtain Motion Sensor for best use of its detection zones.

* All measurements are approximate and will vary with installation.

STEP 6: INSTALL THE SENSOR



Install the Curtain Motion Sensor on a clean surface using the 2-sided tape provided. It can be installed on a flat surface or in a corner, vertically, horizontally or upside down.

Notes: Installation on metal can reduce transmission range. Ensure that the device is installed in a dry location away from water, moisture, and rain.



PRODUCT FUNCTION AND LED INDICATORS

BUTTON	LED	ACTION	LED	DESCRIPTION
2 TIMES	●●	NETWORK STATUS	●●●● ●●●● ●●●●	JOINED NOT JOINED RE-JOIN IN PROCESS
4 TIMES	●●●●	NETWORK JOIN	●●●● ●●●● ●●●● ●●●● ●●●●	SEARCHING FOR NETWORK DEVICE BEING CONFIGURED DEVICE JOINED DEVICE FAILED TO JOIN
8 TIMES	●●●●●●●●	FORCED RE-JOIN	●●●●	RE-JOIN, SEARCHING FOR PARENT
10 TIMES	●●●●●●●●●●	NETWORK LEAVE AND DEFAULT	●●●● ●●●●●●	LEAVE (IF JOINED) AND DEFAULTS RESTORED
		NO ACTION	● ●●●	WRONG BUTTON PRESS DEVICE BUSY
		MOTION DETECTED POWER UP	● ●●●●●●	

